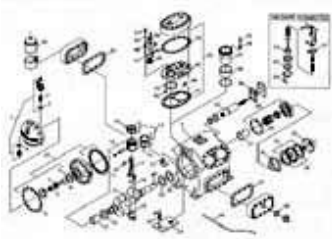


AIR N GAS CONTROL

www.airngascontrol.co.in



Compressor Spares for

CARRIER / VOLTAS MODEL 5H
40/60/80/120

BOCK SPARES

CARRIER / VOLTAS MODEL 5F
20/90/40/60

**SABRO / SMC
SPARES**

CARRIER / VOLTAS MODEL 6D
48/68/75

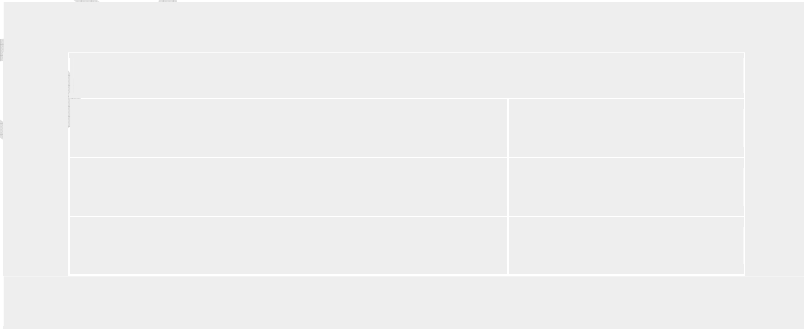
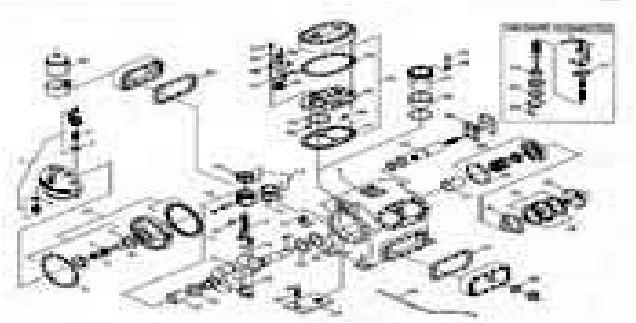
Compressor Spares for CARRIER / VOLTAS MODEL 5H 40 / 60 / 80 / 120

Image	Carrier Part No	Description	5H 40/46	5H 60/66	5H 80/86	5H 120/126
	5H40-502	(Complete Gasket Set) Gasket 5H40/46	1			
	5H60-502	Gasket 5H60/66		1		
	5H80-502	Gasket Set 5H80/86			1	
	5H120-502	Gasket Set 5H120/126				1
	5H40-1002	Bearing Half Connecting Rod std.	8	12	16	24
	5H40-1012	Main Bearing Seal End	1	1	1	1


	5H40-1023	Piston 5H40/60/80/120	4	6	8	12
	5H46-1023	Aluminum Piston 5H46/66/86/126	4	6	8	12
	5H46-1051	Piston Pin	4	6	8	12
	5H40-3531	Lock Ring (Circlip)	8	12	16	24
	5H40-1091	Oil Ring	8/4	12/6	16/8	24/12
	5H46-1071	Piston Ring Compression 5H46/66/86/126	8	12	16	24
	5H40-1062	Seal End Bearing Washer (Steel)	1	1	1	1

	5H120-1072	Seal End Thrust Washer (Steel)				1
	5H40-1082	Pump End Bearing Washer	1	1	1	1
	5H40-1103	Valve Plate	2	3	4	6
	5H40-1142	Suction Valve Disc	4	6	8	12
	5H40-1481	Discharge Valve Guide Lock Washer	12	18	24	36
	5H40-1752	Unloader Sleeve	3	4	6	8

	5H40-1791	Suction Valve Spring	24	36	48	72
--	-----------	----------------------	----	----	----	----



Compressor Spares for CARRIER / VOLTAS MODEL 5H 40 / 60 / 80 / 120

Image	Carrier Part No	Description	5H 40/46	5H 60/66	5H 80/86	5H 120/126
	5H40-2221	Snap Ring for liner	3	4	6	8

	5H40-2231	Pin for Valve Lifter	18	24	36	48
	5H40-2241	Spring for Valve Lifter	18	24	36	48
	5H40-2433	Shaft Seal Cover Plate	1	1	1	1
	5H40-2851	Shaft Key	1	1	1	1
<u>Image</u>	<u>Carrier Part No</u>	<u>Description</u>	<u>5H 40/46</u>	<u>5H 60/66</u>	<u>5H 80/86</u>	<u>5H 120/126</u>
	EBS1F4270	Relief Valve	1	1	1	
	6.301400	Relief Valve Assembly 5H120				

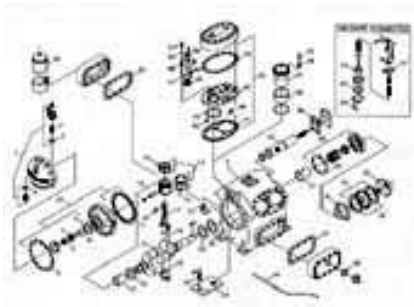
	HT31AZ-241	Crankcase Heater 230 v	1	1	2	2
	5H40 A382	Suction Felt Package	1			
	5H60 A382	Suction Felt Package		2		
	5H80 A382	Suction Felt Package			1	
	5H120 A382	Suction Felt Package				2
	6200024	Retaining Bend	1			
	6200024	Retaining Bend		2		
	6200024	Retaining Bend			1	
	6200024	Retaining Bend				2
	6200024	Retaining Bend	1			
	6200024	Retaining Bend		2		
	6200024	Retaining Bend				2
	6200024	Retaining Bend				2
	5H40-932	Oil Return Check Valve	2	2	2	
<u>Image</u>	<u>Carrier Part No</u>	<u>Description</u>	<u>5H 40/46</u>	<u>5H 60/66</u>	<u>5H 80/86</u>	<u>5H 120/126</u>
	5H40-1041	Connecting Rod Bolt	4	6	8	12
	AT61AA272	Connecting Rod Nut	8	12	16	24

	5H40-1031	Connecting Rod Small end Bush	4	6	8	12
	5H40-112	Discharge Valve Guide Assembly	4	6	8	12
	5H40-1132	Discharge Valve Ring Plate	4	6	8	12
	5H40-1191	Discharge Valve Inner Seat	4	6	8	12
	5H40-1201	Seal Lock Plate	4	6	8	12
<u>Image</u>	<u>Carrier Part No</u>	<u>Description</u>	<u>5H 40/46</u>	<u>5H 60/66</u>	<u>5H 80/86</u>	<u>5H 120/126</u>
	5H40-1801	Discharge Valve Spring	24	36	48	72

	5H40-237	Oil Screen package	1	1	1	
	5H120-252	Oil Screen package				1
	5H40-163	Unloader Power Assembly	3	4	6	8
	5H40-1814	Pork for above				
Image	Carrier Part No	Description	5H 40/46	5H 60/66	5H 80/86	5H 120/126

	5H120-477	Seal Assembly				1
	5H120-948	Bearing Head Assembly	1	1	1	
	5H120-948	Bearing Head				1
	5H40-150	Oil Pump Package	1	1	1	
	5H120-150	Oil Pump Package				1
	5H40-1022	Main Bearing Pump End	1	1	1	
	5H120-1022	Main Bearing Pump End				1
	7k3-1542	Oil Pump Bushing	1	1	1	
	5H120-7052	Oil Pump Bush				1

	5H40-962	Oil Pressure Regulator	1	1	1	
	5H120-782	Oil Pressure Regulator				1
	5H40-114	Crankshaft 5H40	1			
	5H46-114	Crankshaft 5H46	1			
	5H60-114	Crankshaft 5H60		1		
	5H66-562	Crankshaft 5H66		1		
	5H80-562	Crankshaft 80			1	
	5H86-572	Crankshaft 5H86			1	
	5H120-114	Crankshaft 5H120				1
	5H126-562	Crankshaft 5H126				1



Compressor Spares for

**CARRIER / VOLTAS MODEL 5H
40/60/80/120**

BOCK SPARES

**CARRIER / VOLTAS MODEL 5F
20/90/40/60**

**SABRO / SMC
SPARES**

**CARRIER / VOLTAS MODEL 6D
48/68/75**

Compressor Spares for CARRIER / VOLTAS MODEL 5H 40 / 60 / 80 / 120

Image	Carrier Part No	Description	5H 40/46	5H 60/66	5H 80/86	5H 120/126
	5H40-323	Suction Strainer 5H40/46	1			
	5H80-323	Suction Strainer 5H80/86			1	
	5h60-132	Suction Strainer 5H60/66		1		

	5H120-794	Suction Strainer 5H120/126				1
	5h40 - A564	Pump end cover and valve assembly	1	1	1	
	5h120 - A564	Pump end cover and valve assembly				1
	5F40-767	Hydraulic Relay	1	1	1	
	6245-123	Hydraulic Relay				1
	CA99JA101	Magnetic Plug	1	1	1	1

	5H40-1003	Cylinder Liner	4	6	8	12
	5H80-1242	Center Bearing			1	1
	5H120-1242	Center Bearing			1	1
	5H120-1354	Oil Impeller				1
	EMI3FC521	Discharge Shut off Valve 2 - 1/8	1			
	EF13FC551	Suction Shut off Valve 2 - 5/8	1			
	EMI3GC553	Discharge Shut off Valve - 3-1/8		1		
	EMI3GC553	Discharge Shut off Valve - 3-1/8		1		

	EMI3GC553	Discharge Shut off Valve - 3-1/8			1	
	EMI3GC555	Suction Shut off Valve - 3-1/8			1	
	MI3GC555	Suction Shut off Valve - 4 1/8				1
	6302500	Discharge Shut off Valve - 4 1/8				1
	5F40-721	Control Valve Package	1	1	1	1
	5HG-660-014	Bellow Assembly	1	1	1	1
	5F88-213	External Valve Assembly	1	1	1	1
--		Flywheel 5C x 11 3/4	1	1		
		Flywheel 7C x 11 3/4			1	
		Flywheel 9C x 11 3/4				1

EMAIL: - yashangc@yahoo.com

From

YASH PAL SANDHU

**AIR N GAS CONTROL
DLF INDS AREA,
MOTI NAGAR NEW DELHI-15
PH 011-25152937, 41425937,
9811709724.**

www.airngascontrol.co.in